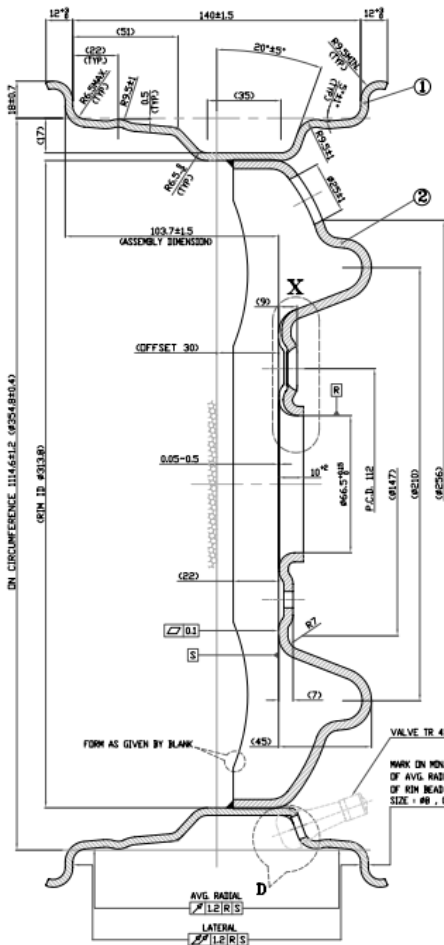
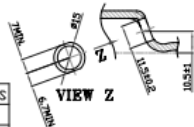


PROPERTY OF SSWL THIS DRAWING MUST NOT BE REPRODUCED OR DISCLOSED TO THIRD PARTIES WITHOUT THE PRIOR CONSENT OF SSWL. ALL RIGHTS RESERVED

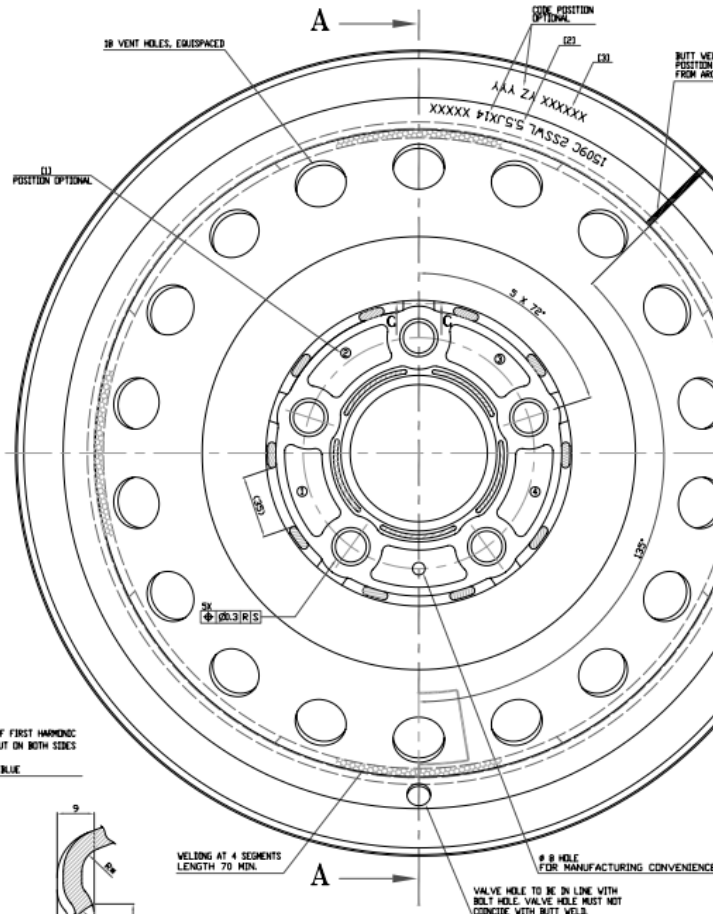
DO NOT SCALE THE DRAWING



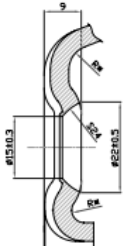
SECTION-AA



DETAIL-D



SECTION-CC (2:1)



DETAIL-X (2:1)

* - AS FORMED

NOTES :-

- MARKING LOCATION ON DISC AS (1)
MARKING ON DISC AS
(1) DISC BATCH CODE AS XXXX YY YEAR & MONTH OF MFG & MATERIAL CODE.
(2) 1738
(3) DISC CODE
(4) SSWL168
- RIM CODE MARKING LOCATION AS (2)
MARKING ON RIM AS: YMMR ESSWL 55JX14 XXXXX
YY YEAR & MONTH OF MFG, MTRL. CODE,
MANUFACTURER'S IDENTIFICATION, SIZE SPEC. & RIM CODE
ASSEMBLY CODE MARKING LOCATION AS (3)
ASSEMBLY MARKING ON RIM AS XXXXXX YZ YYY
YY DATE, MONTH & YEAR OF MANUFACTURING, SHIFT,
MACHINE NO. & WHEEL NO.
- PAINT (AS PER - TUV 466/33 DIN 5002)
PRIMER COAT : C.E.B. BLACK
SALT SPRAY RESISTANCE : 384 Hrs MIN.
FINISH PAINT : POLYCHROMATIC SILVER GREY
ON FRONT VISIBLE PORTION ONLY.
- WHEEL LOAD : 900 Kg
- CORNER FATIGUE TEST (AS PER - TUV 462)
BENDING MOMENT - 5627 Kgfm (52039 Nm)
MINIMUM NUMBER OF LOAD CYCLES AT 75% OF BENDING MOMENT : 2.0X10⁴
MINIMUM NUMBER OF LOAD CYCLES AT 50% OF BENDING MOMENT : 2.0X10⁵
- RADIAL FATIGUE TEST (AS PER - TUV 462)
TEST LOAD - 1800 Kg (17658N)
MINIMUM ROLLING DISTANCE OR NUMBER OF WHEEL REVOLUTIONS
2000 Km OR 10 X 10⁵ CYCLES
- WELD SHEAR STRENGTH : 30 TON MIN.
- STATIC OUT OF BALANCE : 600 gm-cm MAX.
- REF. WHEEL WEIGHT : ~9Kg
- APPLICABLE TYRE SIZE : 205/70 R14, 195/70 R14, 195/65 R14, 185/70 R14
- APPLICABLE VALVE - TR 13, TR 413
- WHEEL SHOULD BE SUITABLE FOR USE IN TUBELESS TYRES.
NOTE :
BE FREE FROM POOR WELDING, AIR LEAKS AND CRACKS
DUE TO PRESSING

TOLERANCES UNLESS SPECIFIED

DISTRIBUTION OF DIMNS.	TOLERANCES
BELOW 30	± 0.6
30 & BELOW 120	± 1.1
120 & ABOVE	+ 1.6

2	DISC	SAPH 440 OR EQUI.	4.5±0.25
1	RIM	SAPH 440 OR EQUI.	3.7±0.25
S.No.	PART	RAW MATERIAL	THICKNESS
NAME	DATE	STEEL STRIPS WHEELS LIMITED	
DRN.	VA	30/09/15	
CHD.	KK	30/09/15	
APD.	BK	30/09/15	
SCALE	1 : 1		
REV.	DATE	DESCRIPTION OF CHANGE	BY
		ALL DIMNS. IN M.M.	APD.
		TITLE	DRG. NO.
		WHEEL COMP.-55JX14H2 (12 PCD, SPHERICAL)	CA-5.5Jx14-160A
			SHEET 01 OF 01